

jBeats4zOS

Elasticsearch extension for z/OS

End-to-end-Monitoring for Mainframe systems

Decentralization leads to larger and more complex systems which need to be monitored.

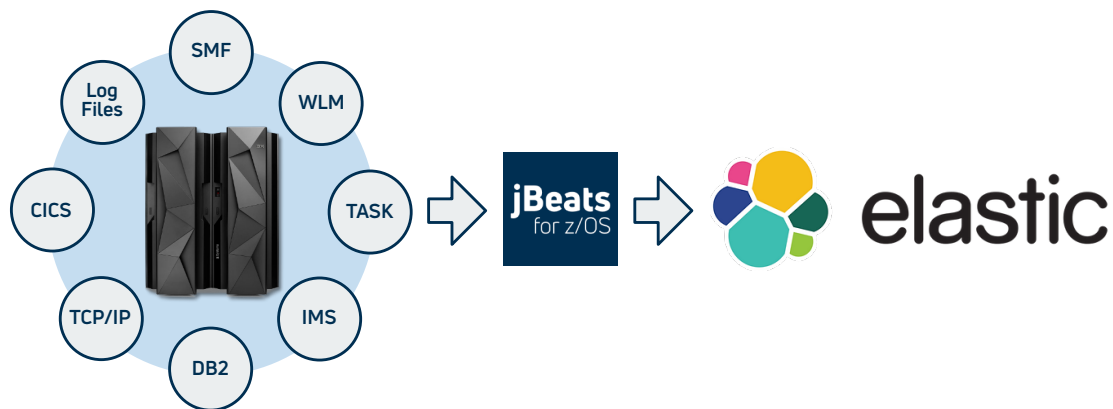
However, one central aspect is often not taken into account: **the integration of mainframe systems into the system monitoring.**

The reason often is non-existent or insufficient software support that makes main-

frame data unavailable for analysis.

With jBeats for z/OS this state belongs to the past.

Our software solution gives you an innovative platform to support the processes capacity management, accounting and monitoring.



Integration of Mainframe Systems

A superordinate view as well as flexible search possibilities are the demands of the management today. **jBeats for z/OS takes these requirements into account** by enabling the integration of the mainframe monitoring into the Elasticsearch stack.

This enables graphical processing and displaying historical time series as well as

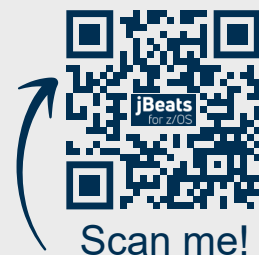
the evaluation of log data from monitoring systems.

Currently, more than 50 data sources from the mainframe environment can be processed and displayed.

For a full list see: <https://jbeats4zos.com/en/supported-datasources/>

Your benefits of jBeats4zOS

- All systems at a glance
- Common metrics already available
- Quick start thanks to ready-made dashboards
- High data quality due to integrated „duplicate checking“
- No dependencies on third party manufacturers
- More than 50 available data sources ready to use



[jBeats4zos.com](https://jbeats4zos.com)

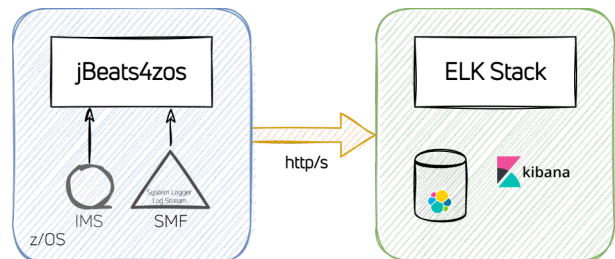
jBeats4zOS

Elasticsearch extension for z/OS

Technology

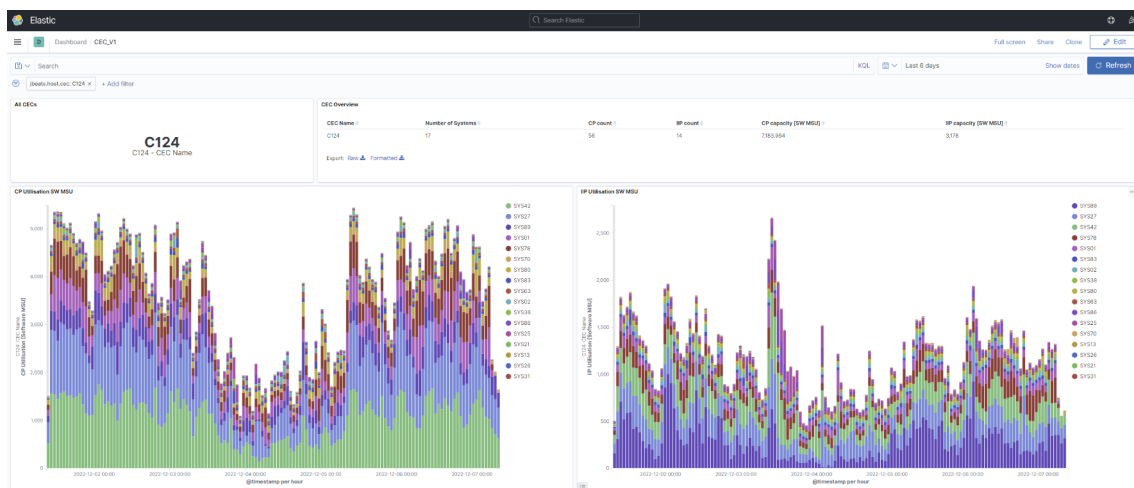
The z/OS Data-Collector of jBeats is launched as a dedicated Started Task in z/OS. The data collector is a **zIIP-Eligible Java program**, so there **no further costs by using the mainframe!**

Collection and processing of the relevant data is integrated by jBeats into the ELK stack (Elasticsearch / Logstash / Kibana). With jBeats, the sophisticated search function of Elasticsearch and the extensive display options of Kibana are made available for mainframe monitoring.



However, data transfer is only a small part of the functional scope. Full configurability of all data sources is included, as well as the provision of complex pre-calculated metrics.

This allows **"Meantime to Repair"** and **service stability to be optimized for your customers.**



Added Value

Performance and capacity management are possible in real time with jBeats. The relevant key figures can be visualized efficiently and clearly through the end-to-end view. The empirical values as well as the proven procedures and methods from several decades of work in the mainframe environment represent the exclusive added value of jBeats4zos.

Contact and Consultation

Benefit from our many years of experience in data preparation to make even **your complex mainframe log data usable for analysis and reporting.**

Make **"the next stride"** and contact us for a non-binding consultation.

Next Stride AG
www.nextstride.com
info@nextstride.com

